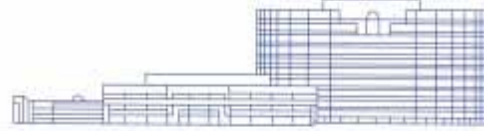


CREW

COMMERCIAL REAL ESTATE WOMEN INC. - Maryland Suburban



The State of the Market | Suburban Maryland

On the heels of CREW Maryland's January focus on economic development initiatives in Maryland, CREW Maryland presents its annual State of the Market report for the region. A distinguished panel of speakers will discuss the realities of 2006 and its impact of the 2007 real estate market, as well as the real estate trends for the next 12 months. Do not miss this program!

date - February 14, 2007

times - 7:30 – 8:00 am Check-in
8:00 – 9:30 am Breakfast & Program

location - [McCormick & Schmick's Seafood Restaurant](#)**
7401 Woodmont Avenue (cross street: Montgomery Lane)
2 Bethesda Metro
Bethesda, MD 20814
301.961.2626

*** Parking is available in the Bethesda Metro Center. Please bring your parking ticket with you for validation at the end of the program.*

registration deadline - **February 9, 2007**

cost - **Registration or Payment received on or before February 9, 2007**
\$45 CREW Member
\$55 Non Member

Registration or Payment received after February 9, 2007
\$55 CREW Member
\$65 Non Member

Cancellation refund requests must be received on or before the deadline to be reimbursed.

Please send the refund request to marylandsuburbancrew@crewnetwork.org or contact Megan Cottrell at 785-832-1808.

register today - [CLICK HERE](#) to register for the program

[<https://www.registrationfactory.com/v3/?EventUUID=5D1131C2>]

Mailing a check?

Please register online and mail your check to:

Megan Wallace
Furey Doolan & Abell LLP
8401 Connecticut Avenue, Ste 1100
Chevy Chase, MD 20815

view attendee list - <http://www.marylandsuburbancrew.org/weblis.xls>

We thank the following companies for their support

CREW Maryland Suburban Patrons

THE CHEVY CHASE LAND COMPANY
OF MONTGOMERY COUNTY, MARYLAND
ESTABLISHED 1890

The Chevy Chase Land Company
Development and Property Management

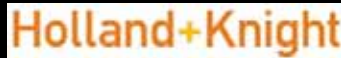


Core Development Group, Inc.
Comprehensive Real Estate Services

CORE Commercial Brokerage LLC/Suburban Properties
Brokerage, Consulting, Development



Grosvenor
Property Investment & Development



Holland & Knight LLP
Attorneys at Law



Linowes and Blocher
Attorneys at Law



Michael T. Rose
Developer of Residential Communities & Commercial Properties



COMMERCIAL REAL ESTATE SERVICES
Maloney and Metz
Commercial Real Estate Services



Stark, Meyers, Eisler & Leatham
Attorneys at Law



Trammell Crow Company
Commercial Real Estate Services



VIKA, Inc.
Engineering, Design and Surveying Services



This email was sent to solicit your interest in the information provided herein.
You are receiving this email because you are a member of CREW or a member has added you to the email list.
If you no longer desire to receive email from CREW, please notify us by REPLYING to this email with "Please Remove" in the subject line.
You may also send written notification to:
CREW Network, 1201 Wakarusa Dr. Ste. C3, Lawrence, KS 66049